

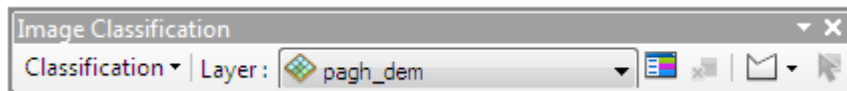
## Image Classification

Require:

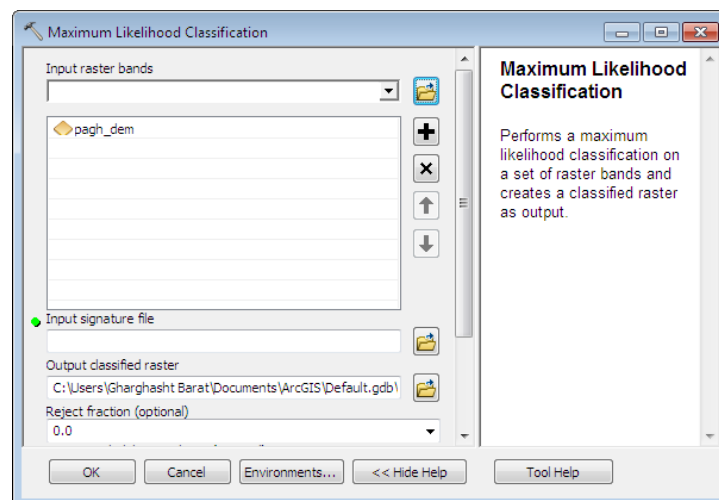
- Image must multiple bands.
- Image with Special Reference
- Image with good cell resolution like 0.5 or 1 m

Steps

- Open ArcMap
- Add Image want to classified
- Check the coordinate
- Activate Image Classification Toolbar



- Click on Training Sample Manager
- Select first area and same like others want to classified
- Draw training sample through (Polygon, Circle or Rectangle)
- After selection of area give name of the class according to area
- Create signature file from Training Sample Manager
- After creating signature file through toolbar click on Maximum Likelihood classification
- Window will be appear fill required fields according to rules



- After process output land cover image will be add inside TOC
- Change symbology value to count.
- Area cell number will be calculate for further geometry calculation.

