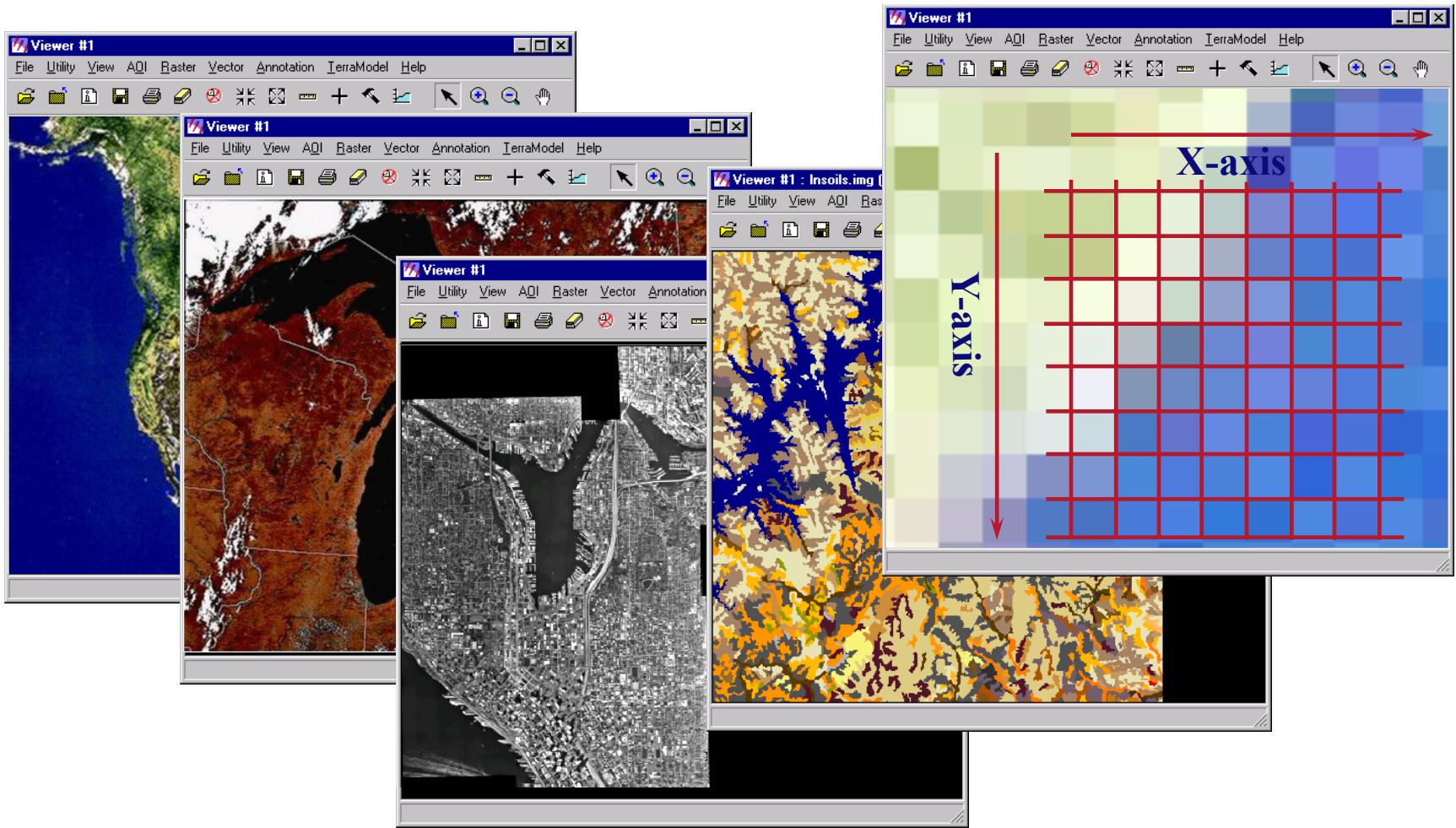


Image Interpretation

By: Dr Abdullah Barat

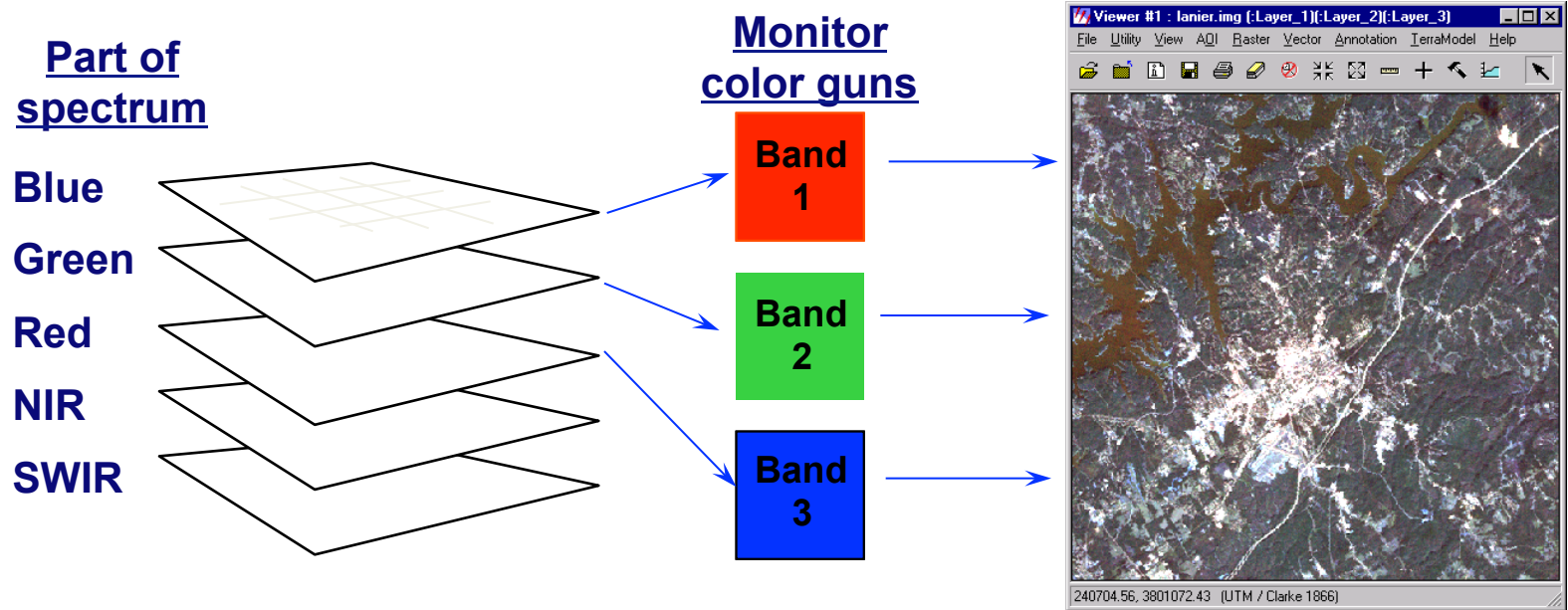
What is an image?

- Data that are organized in a grid of Columns and rows
- Usually represents a geographical area



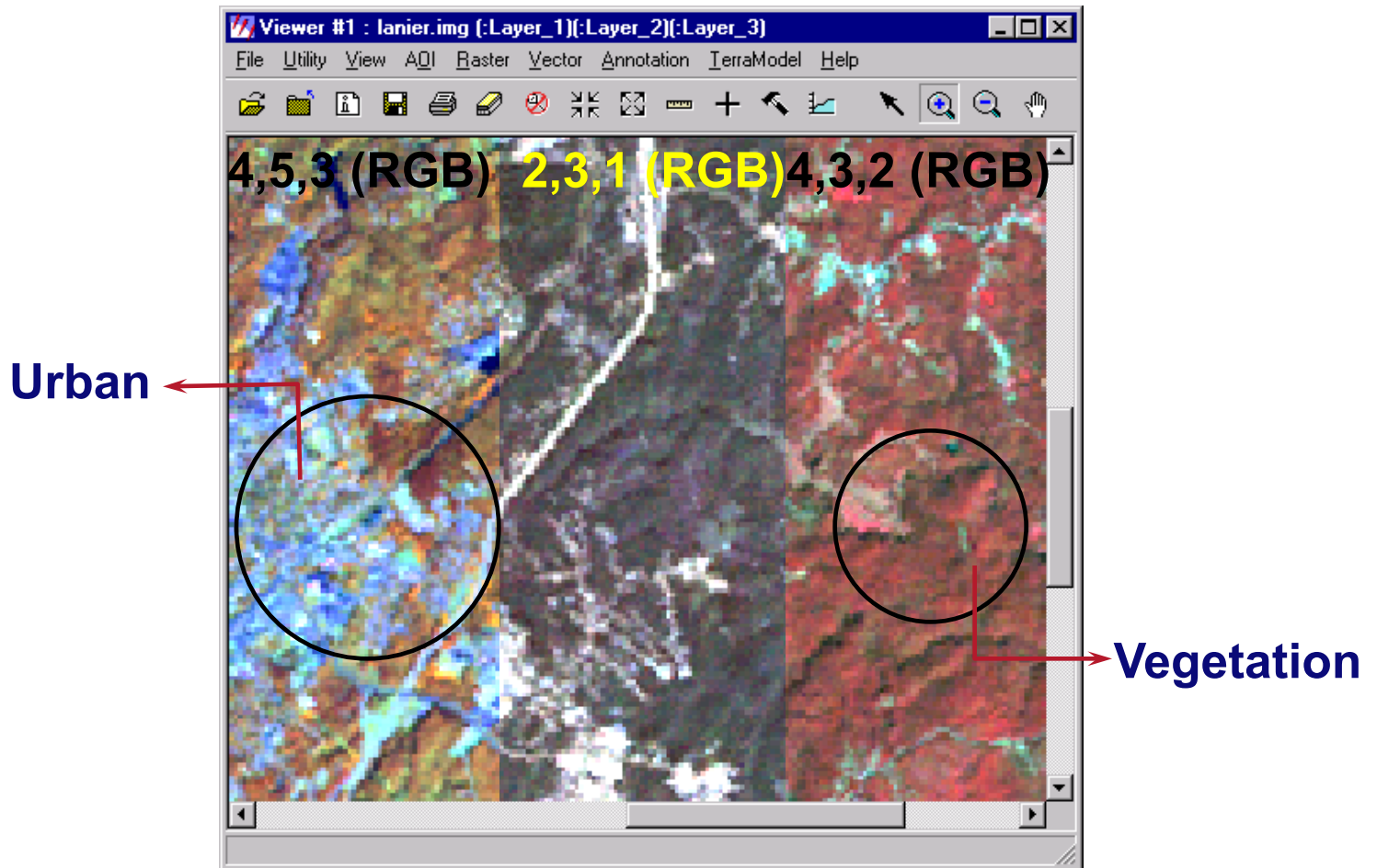
Viewing images

- **Three bands are viewable simultaneously**



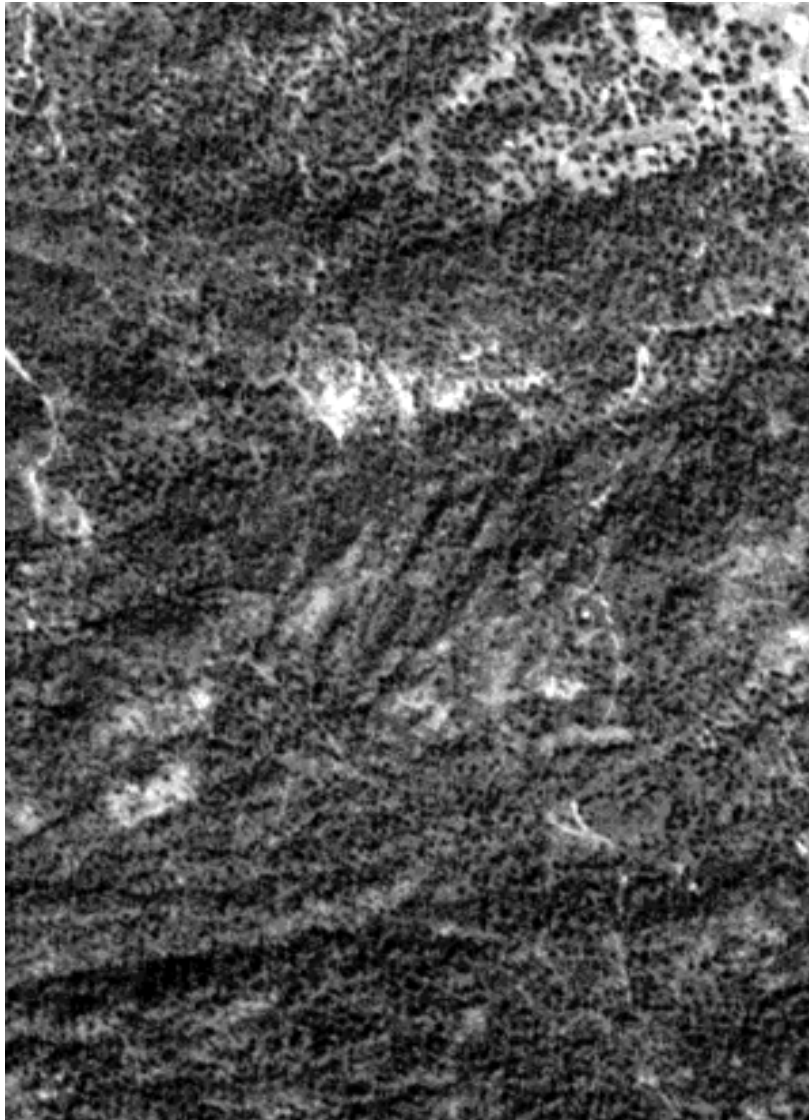
Band Combinations

- Features can become more obvious



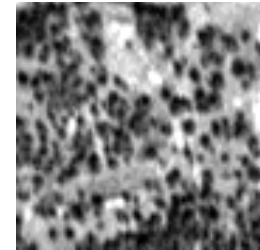
IRS-PAN DATA SHOWING DIFFERENT FOREST CROWN DENSITY LEVELS

Parts of Virajpet district, Karnataka

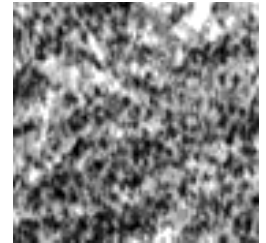


1:25000

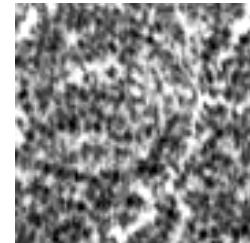
$< 20\%$



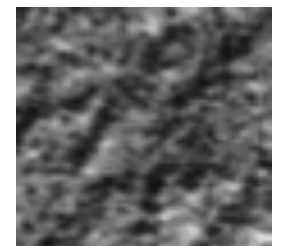
20 – 40%



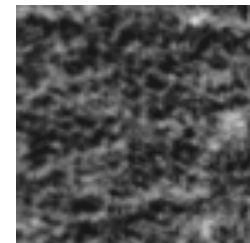
40 – 60%



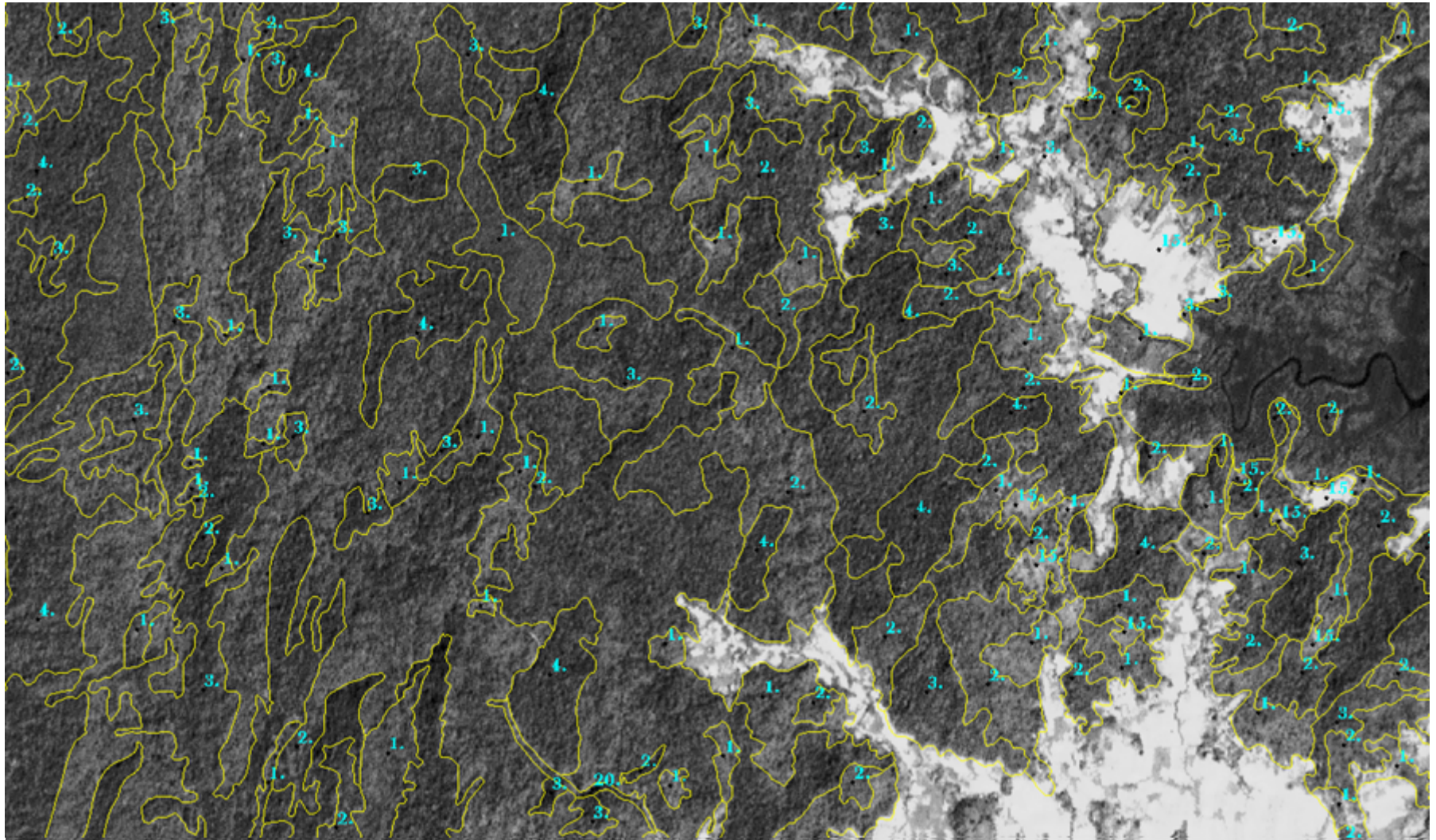
60 – 80%

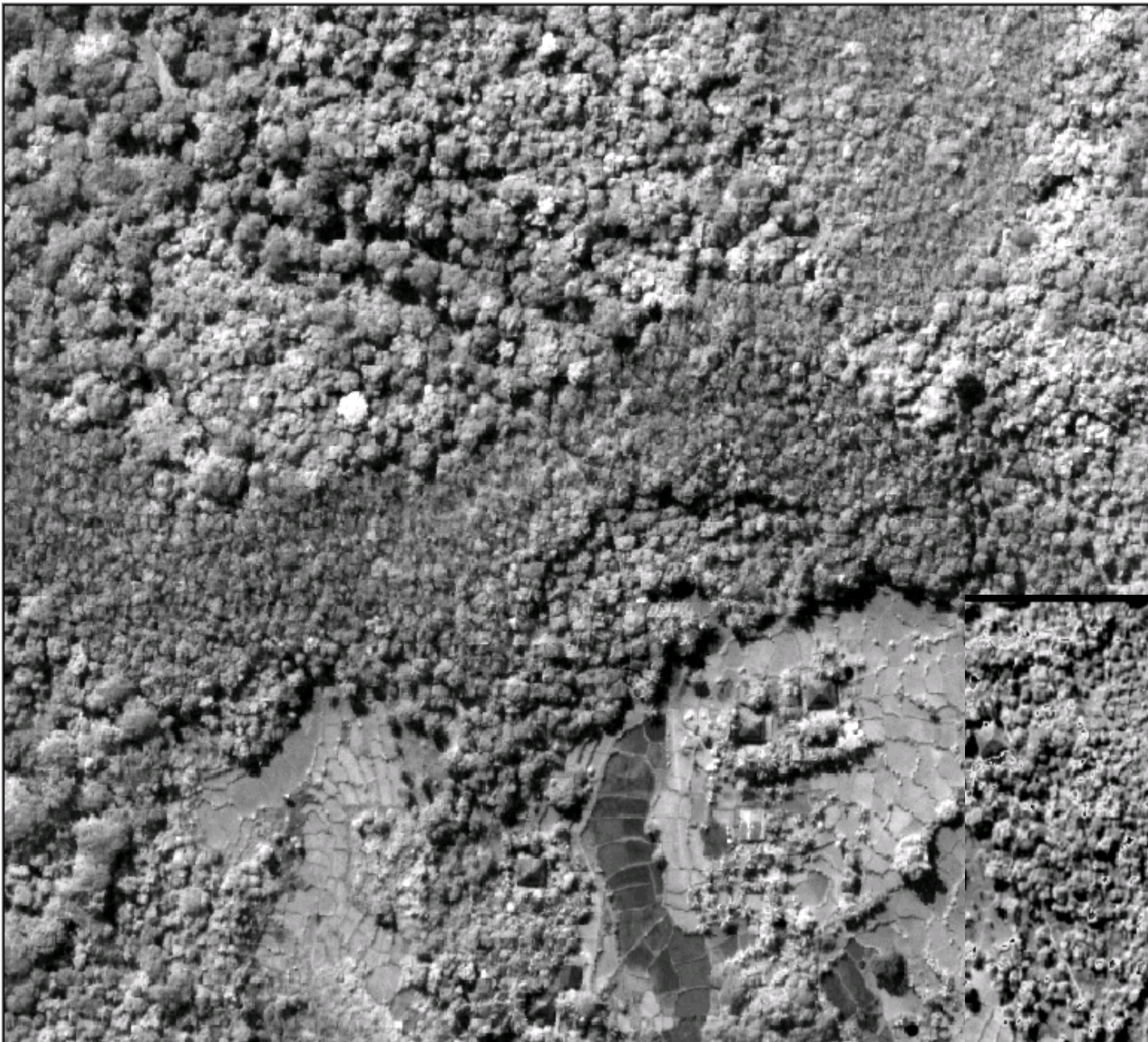


$> 80\%$



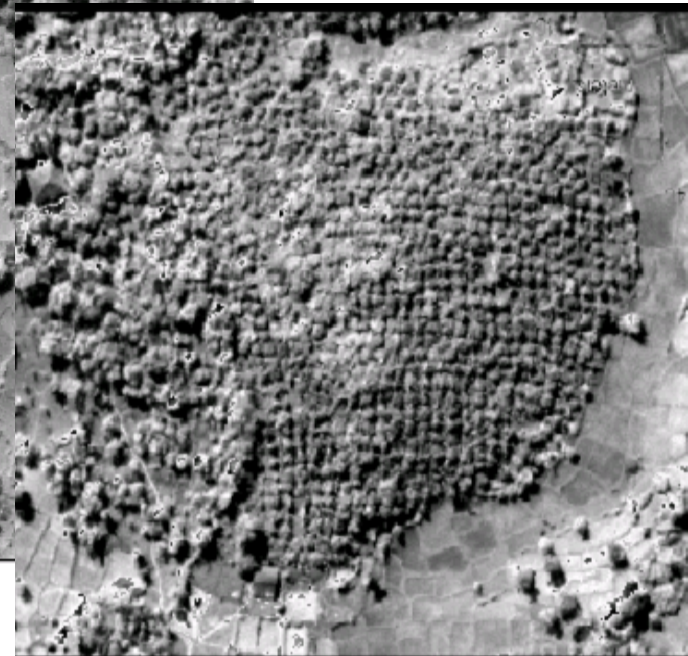
Forest Crown density mapping





**Very high
resolution
B/W satellite
Data over
Sawantwadi
Area, Maharashtra**

Individual crowns,
Plantation details
Can be clearly
interpreted



1 : 5000

Any ?