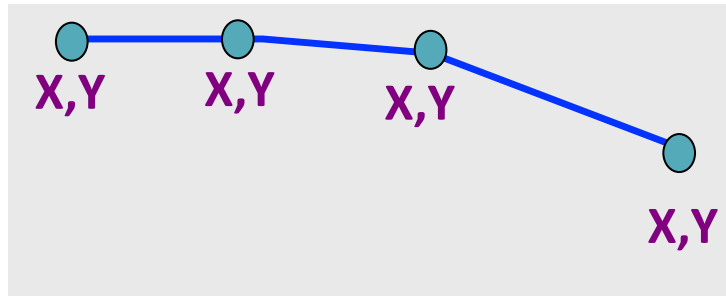


GIS Data Formates

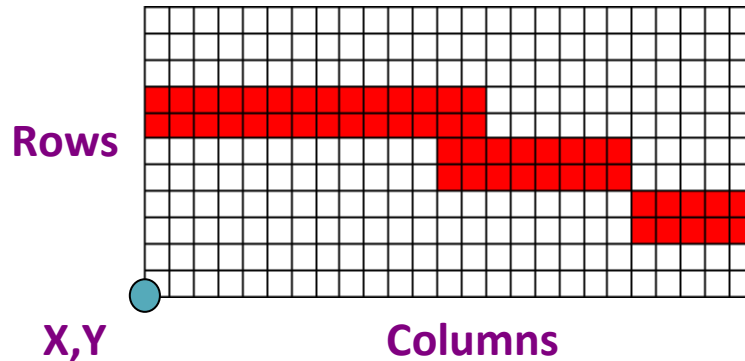
Vector and Raster

Storing Data

- Vector formats
 - Discrete representations of reality

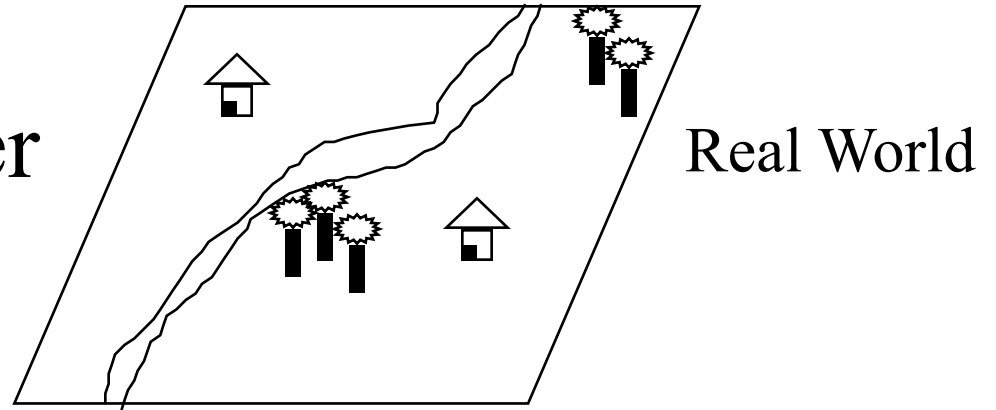


- Raster formats
 - Use square cells to model reality



Reality
(A highway)

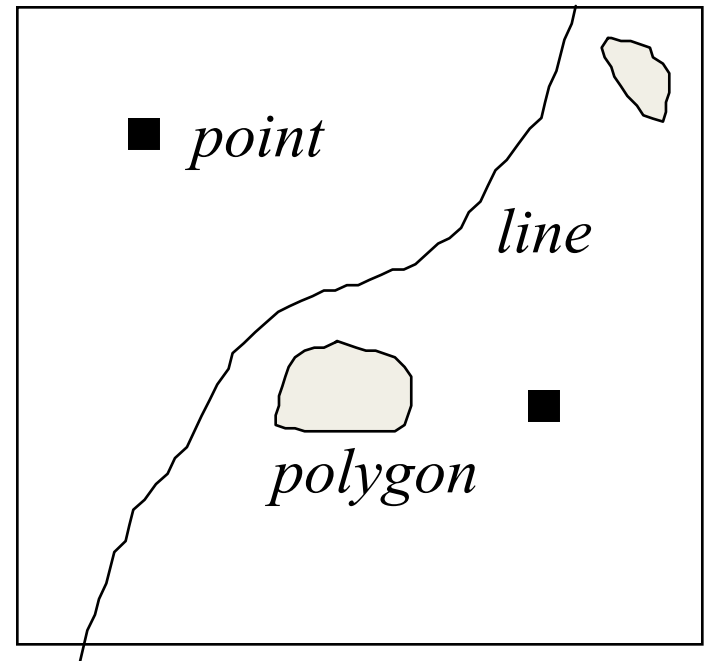
Concept of Vector and Raster

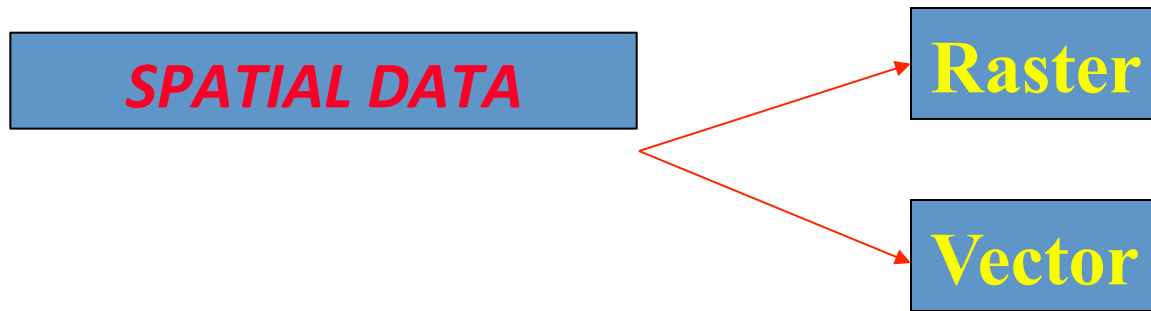


Raster Representation

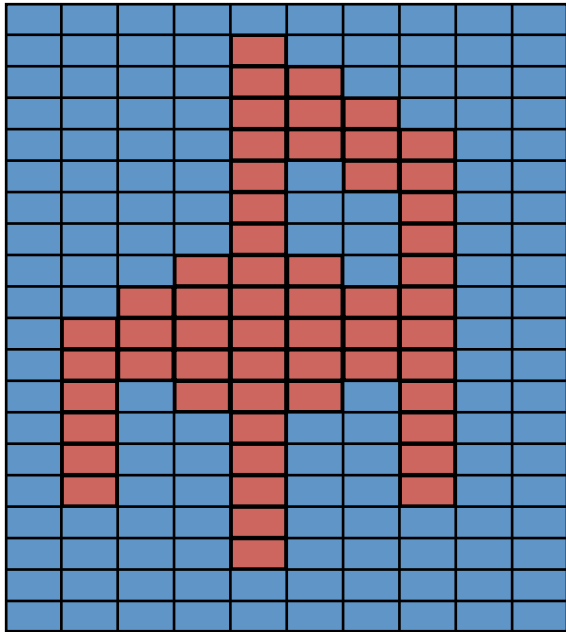
	0	1	2	3	4	5	6	7	8	9
0								R	T	
1							R			T
2		H					R			
3							R			
4					R	R				
5				R						
6			R		T	T		H		
7			R		T	T				
8		R								
9		R								

Vector Representation

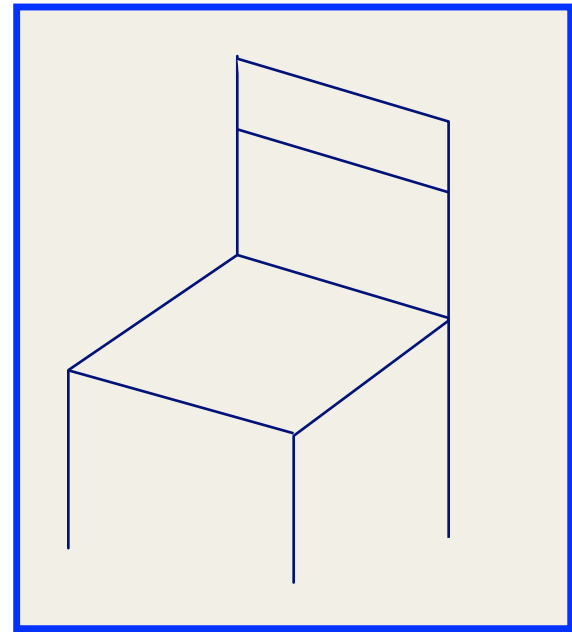




DATA MODEL AND STRUCTURE

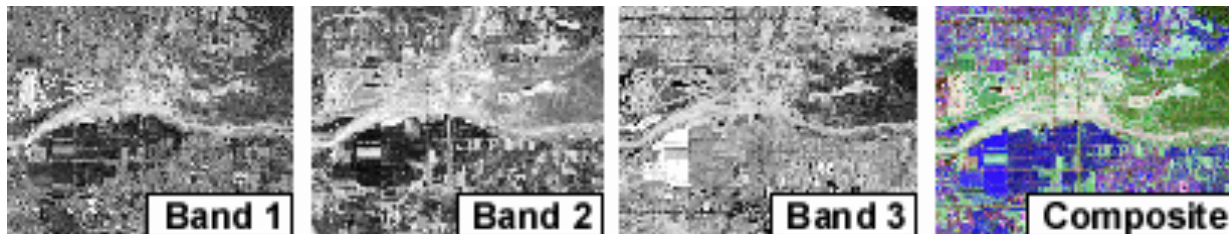


RASTER MODEL

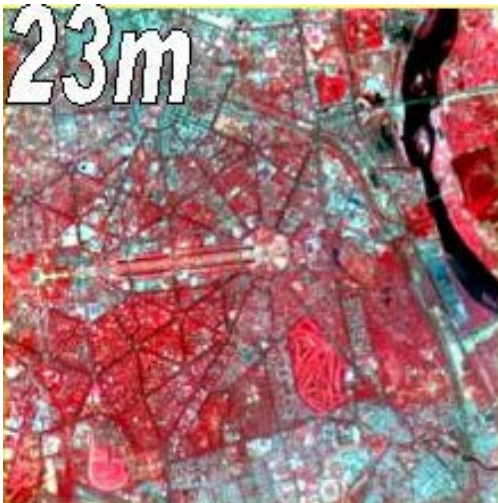
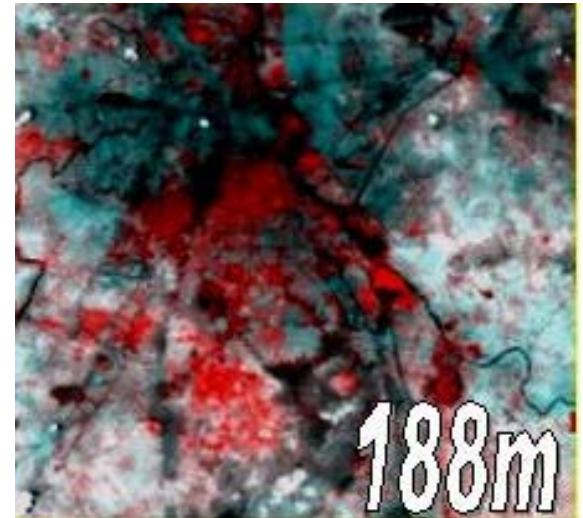
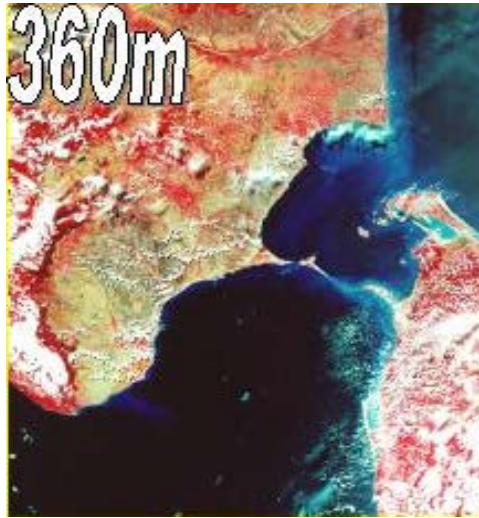
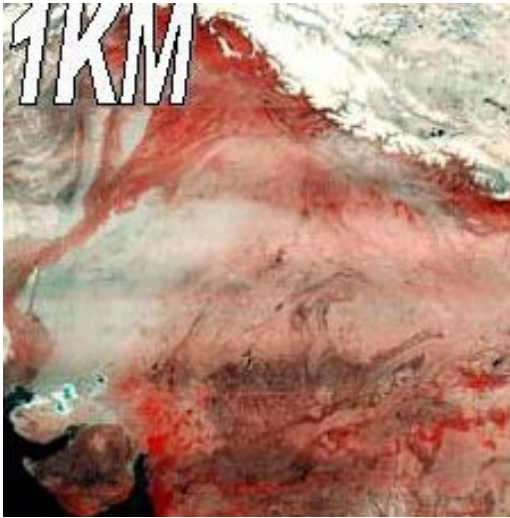


VECTOR MODEL

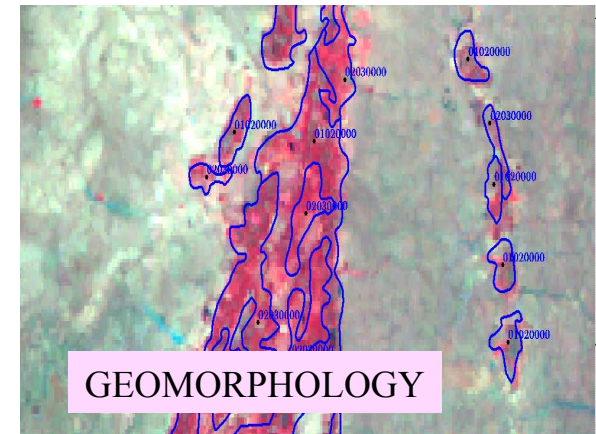
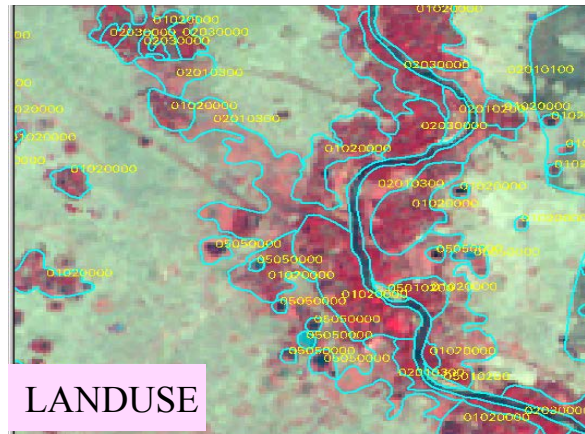
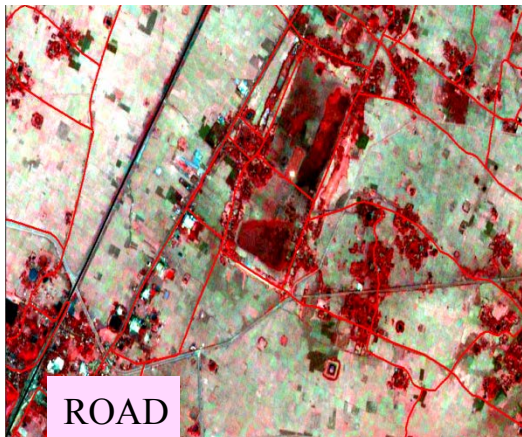
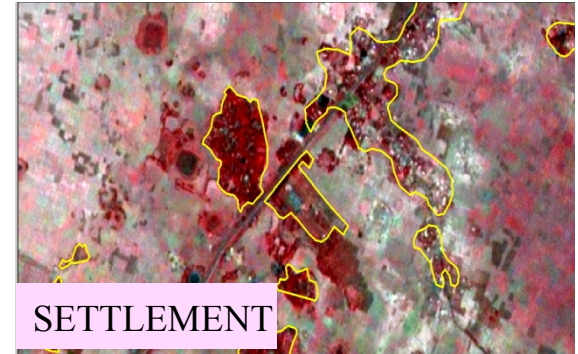
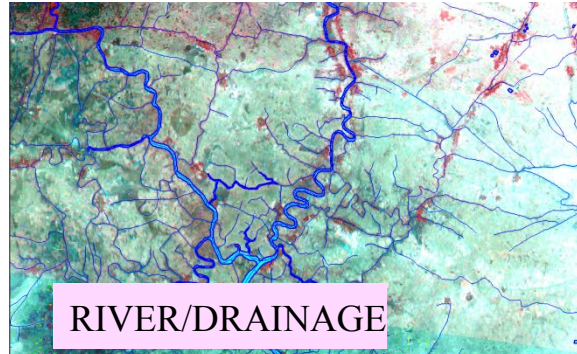
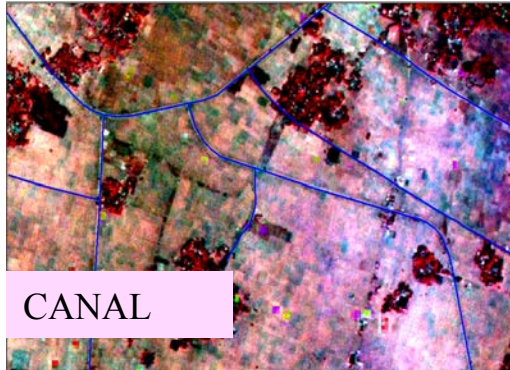
- Rows and columns of equal-sized cells
 - Each cell stores a value
 - Detail depends on cell size
- Images (TIFF, BMP, SID, JPEG, ERDAS)



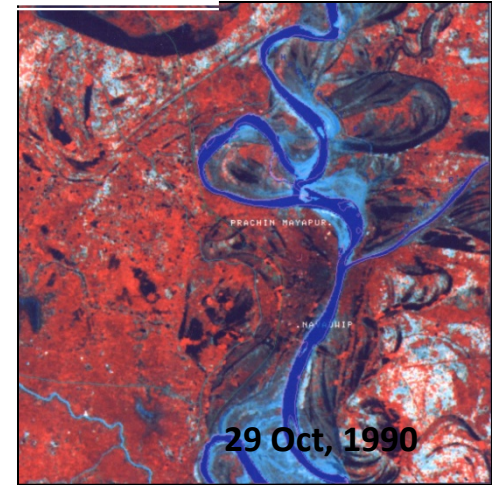
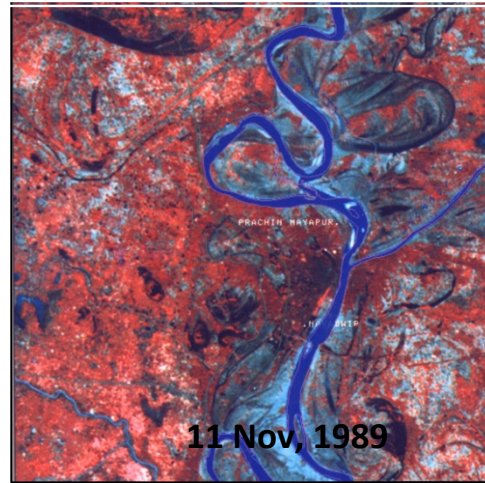
Satellite Images for Disaster Management



GIS DATASETS BASED ON SATELLITE IMAGE



Change of Bhagirathi river course near Prachin Mayapur during April 1989 and October 1990



Change of Ganga river course near Patna during 1993

