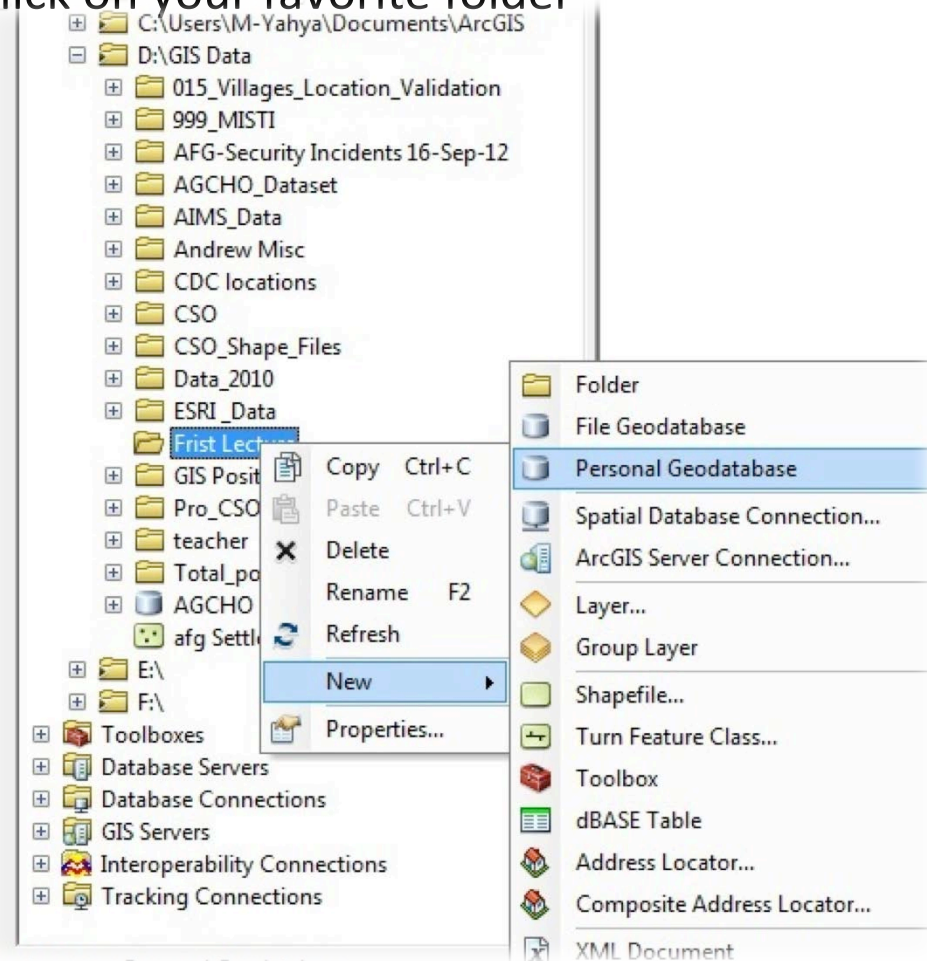


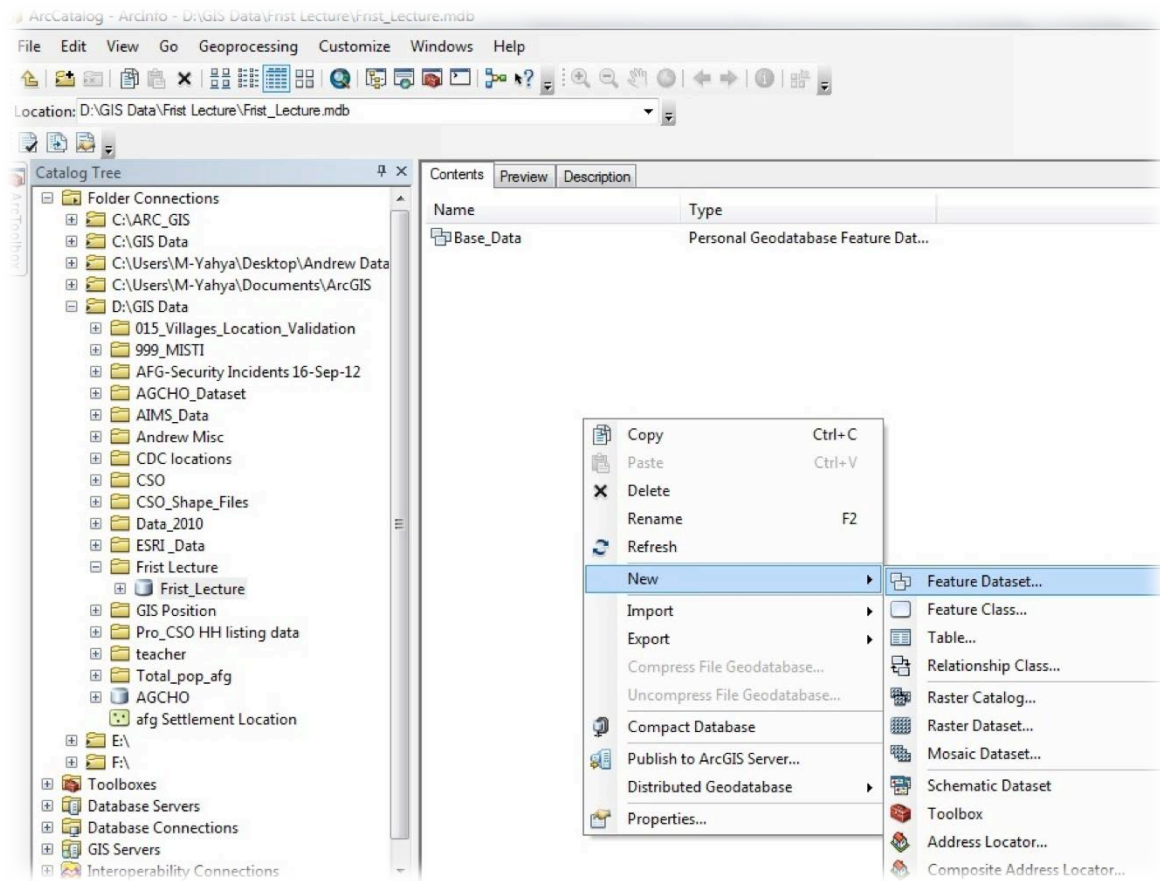
Creating New GDB

- Run ArcCatalog
- Expand your favorite folder / Right click on your favorite folder
- Click on New
- Personal Geodatabase
- Give Name of your Geodatabase



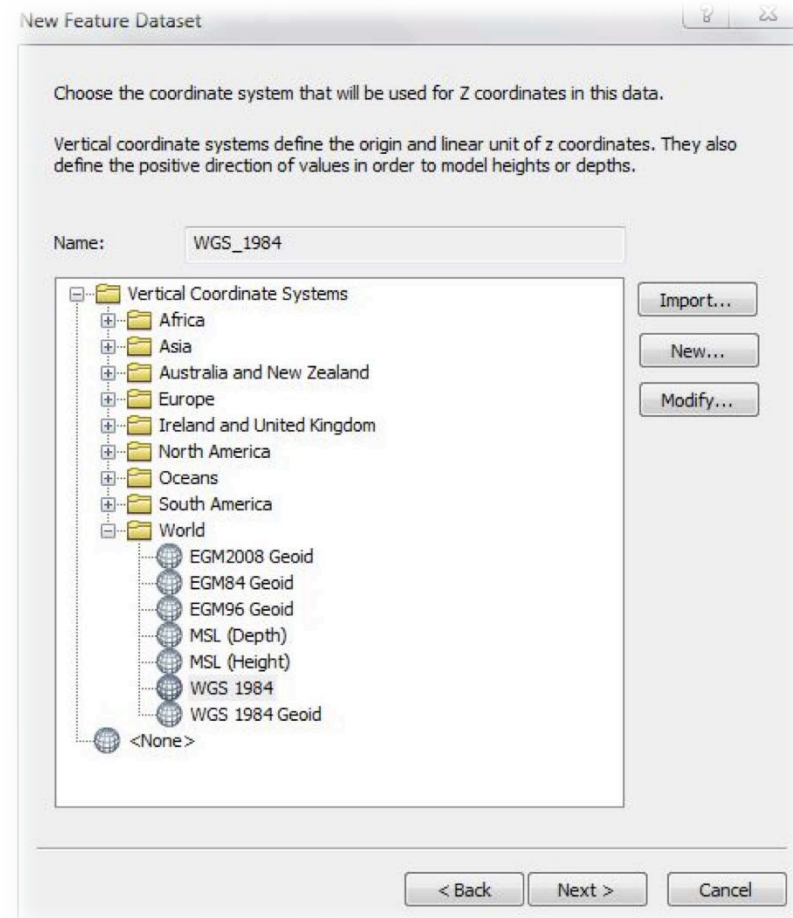
Creating Feature Dataset

- Run ArcCatalog
- Expand your favorite GDB
- Right click
- Click on New
- Click Feature Dataset



Creating Feature Dataset

- Define the Name of your New Feature Dataset
- Define/Choose the coordinate system for your New Feature Dataset
- Expand Geographic Coordinate System
- Expand World Folder
- Click on WGS 1984
- Click Next
- Click Finish



Creating Feature Class

- Expand/Click on your Favorite GDB
- Right Click – Click on New
- Click on New Feature Class
- Define name of your new feature class and Alias
- Define type of your new feature class : Polygon Feature, Line Feature, Point Feature, MultiPoint Feature

Creating Feature Class

- Click on next
- Define the coordinate system for your feature class
- Expand Geographic Coordinate System
- Expand World folder
- Click next
- Click next
- Click Finish

New Feature Class

Name:

Alias:

Type

Type of features stored in this feature class:

Polygon Features

Line Features

Point Features

Multipoint Features

MultiPatch Features

Dimension Features

Annotation Features

Geometry Properties

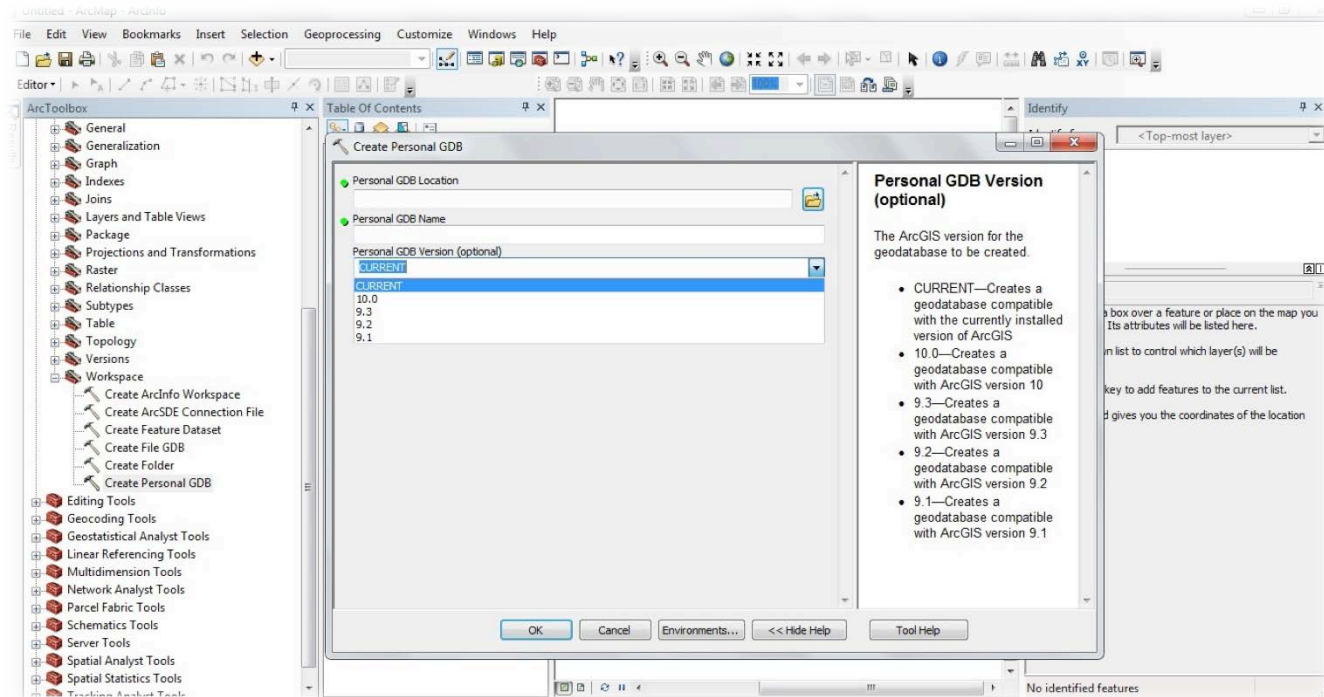
☐ Coordinates include M values. Used to store route data.

☐ Coordinates include Z values. Used to store 3D data.

< Back Next > Cancel

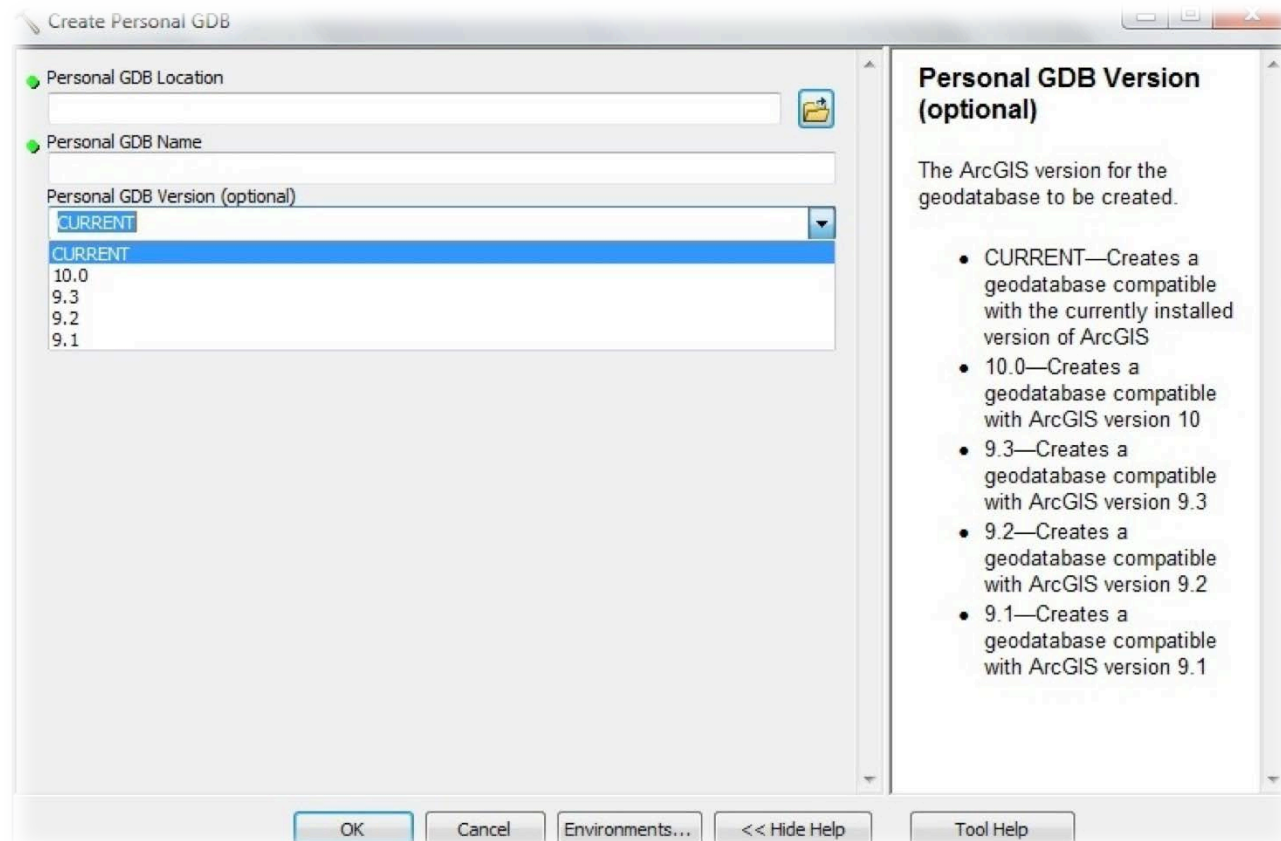
Creating GDB Using ArcToolbox

- Run ArcMap
- Click on ArcToolbox
- Expand Data Management Tool
- Expand Workspace
- Click on Create Personal GDB



Creating GDB Using ArcToolbox

- Define your GDB location “ Personal GDB Location”
- Define your GDB Name “ Personal GDB Name”
- Define your GDB version “Personal GDB Version “
- Click Ok



Exporting Feature Class to Shape File

- Run ArcCatalog
- Expand your favorite GDB
- Right click on feature class that you want to export
- Click on Export
- Two type of export is available: Multiply, Signal
- Click on To Shape File (Signal)

Exporting Feature Class to Shape File

- Define Output Location
- Define Output Feature Class Name
- Define Expression (Optional) (Select filed according our expression to be export)
- Click on Ok

