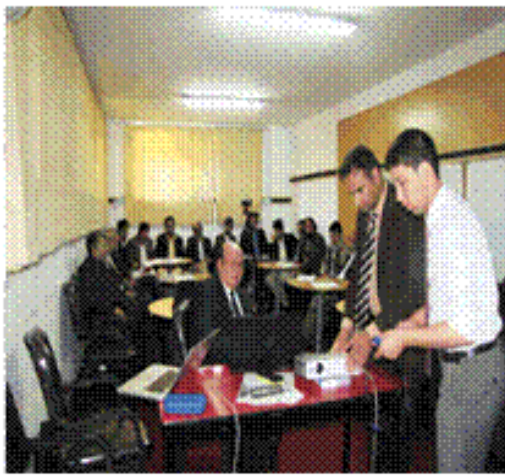


Ministry of Rural Rehabilitation and
Development (MRRD)
Rural Water Supply, Sanitation and Irrigation
Program (RuWatSIP)
Annual Review Meeting

Integrated Approach in Capacity Development on
Provision of Safe and Enough Water for Rural Areas
Through Water Sources Mapping (GIS/MIS) by Using
Ground Water Exploration, Development and Water
Quality Test Approaches

In this Presentation

- Basic Concept on Hydrogeology
- Applied Geophysics on Groundwater Exploration
- Well Hydraulics
- Field Exercise on Electrical Sounding and Resistivity
- Well Drilling, Sampling, Logging and Geological Section
- Water Quality Tests: Physical, Chemical and Biological

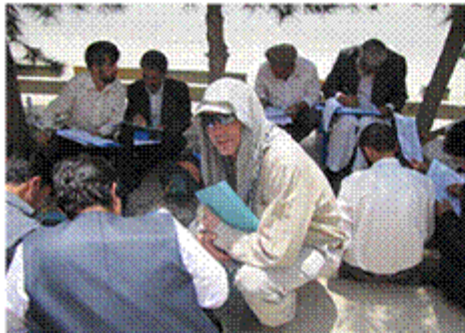


Basic Concepts of Hydrogeology from Class Down to Field Observations, Water Sampling and Testing





**Applied Geophysics in Groundwater Exploration: from Class
down to Field Works, Data Collection, Data Processing and
Interpretation**



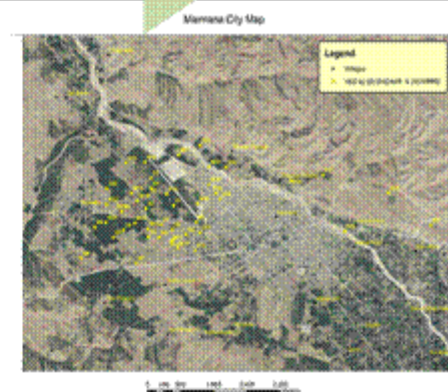


Well Hydraulics: from Theory (Confined and Unconfined Aquifers) Down to Group Works and Practice Calculation of Discharge Based on Pump test



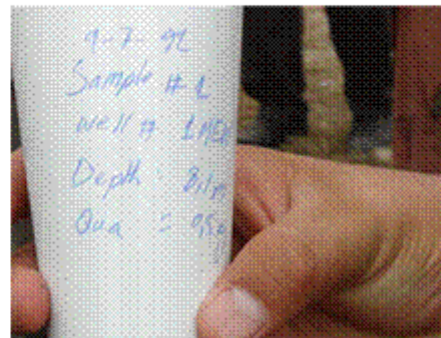


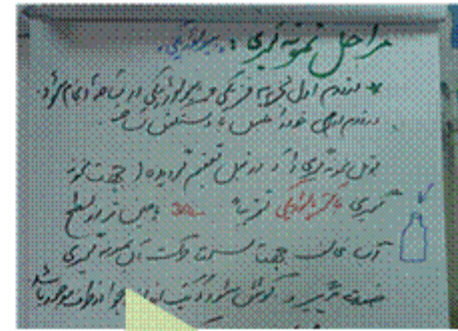
**Applying Electrical Sounding in Groundwater Exploration in Faryab:
from Preparation down to Setting up profiles, electrodes, Reading
and Plotting Data on base Map**





**Hydro-geological Investigation Through Well Drilling
(Rotary Rig) from Rig Installation Down to Drilling,
Geological Logging, Sampling and Data Plotting and
Sketching Geological Section**





Training on Water Quality (Bacteriological, Chemical and Physical) Test Taking into Consideration of Steps of Sampling and Sources of Errors and Quality Control



- GIS/MIS to be Prepared

Observations

- The same Training Materials for Junior and Senior Trainees.
- Absence of Logical Sequences of Training Modules
- Hydro geological Parameters Like Transmissivity, Transmissibility, Drawdown Recovery and Radius of Influence Not Covered in Field work

Recommendations

- Training Materials for Junior and Senior Trainees to be reconciled through Undertaken Pre-Workshop/course quiz.
- Basic Concept of Hydrogeology as potential for groundwater Taking into consideration of Terrain, Formations, Recharge areas etc
- Hydro geological Parameters Like Transmissivity, Transmissibility, Drawdown Recovery and Radius of Influence to be covered