

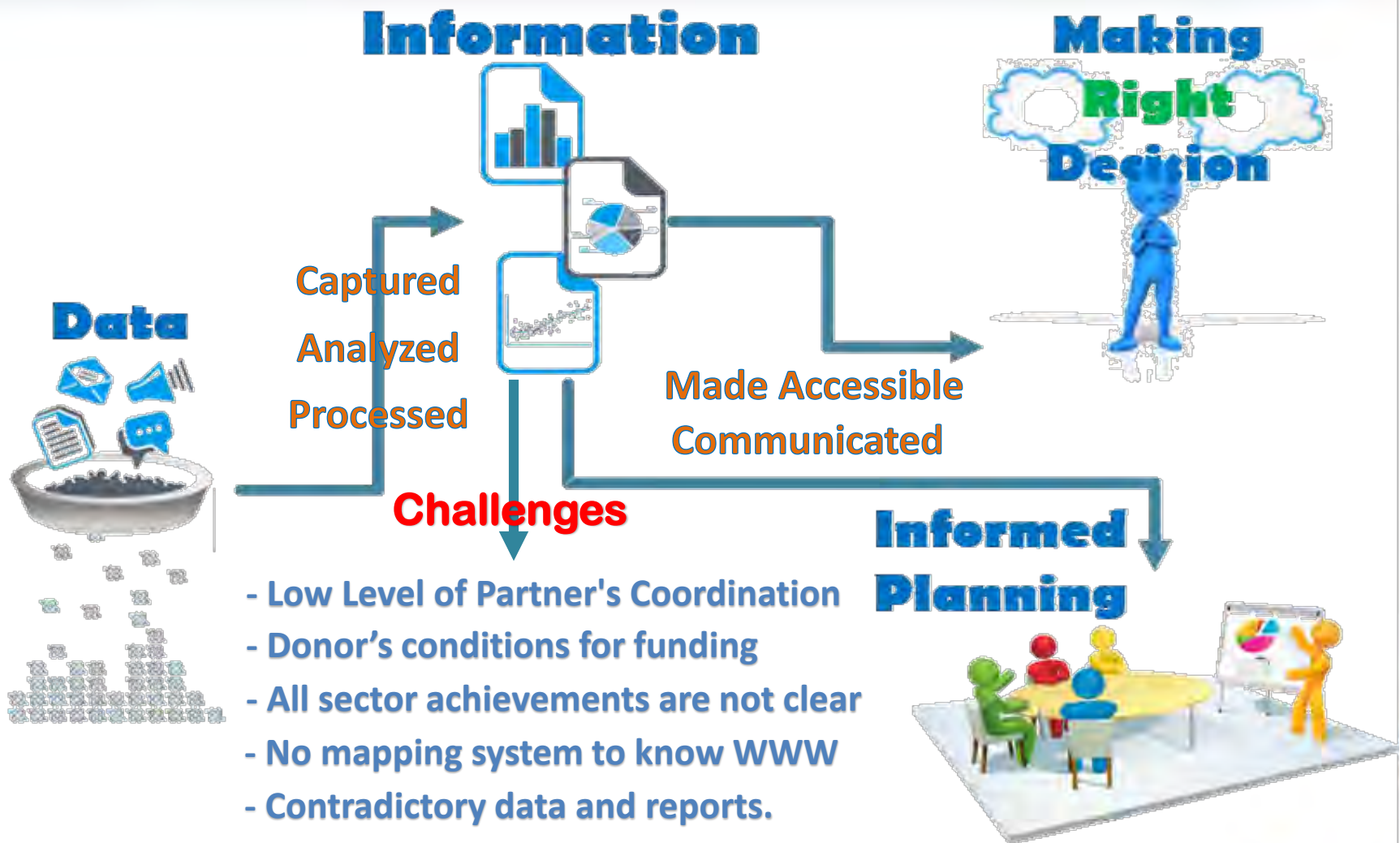


WASH MIS/GIS's Brief

By: Zemary Hamidi, Head of MIS/GIS Department

MRRD/Rural Water Supply, Sanitation and Irrigation Program

WHY MIS/GIS?



WASH MIS/GIS System

- WASH MIS/GIS provides single platform for all partners working in WASH sector to collect, process, store and communicate information from various units of organization to various levels of management for better operations, coordination, informed planning and decision making.

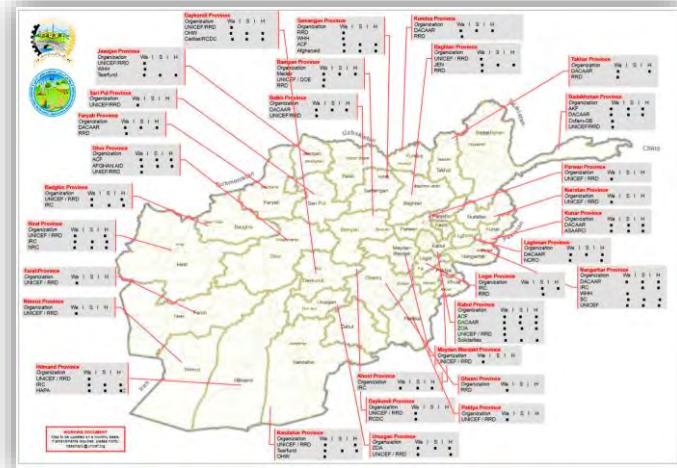
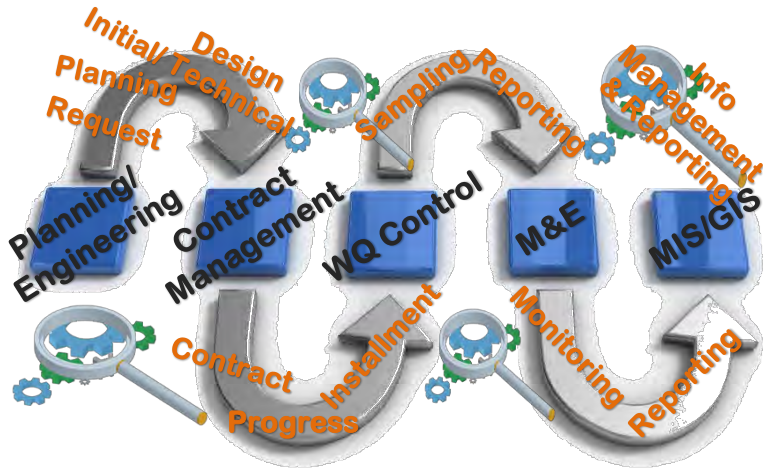


<http://misgis.mrrd-ru-watsip.org>

WASH MIS/GIS System (Cont.)

General Functions of the system:

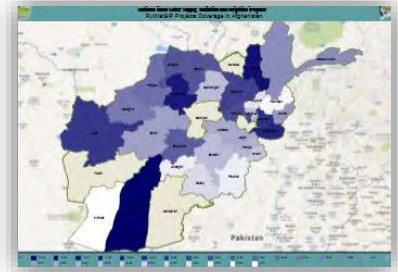
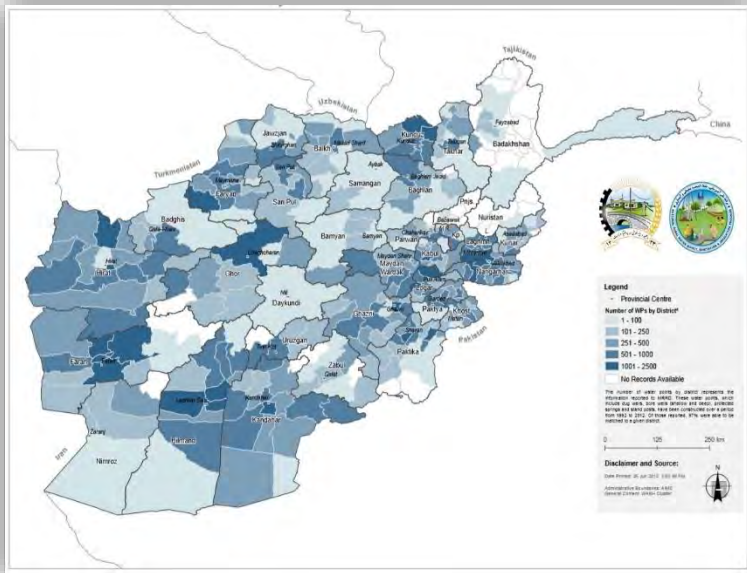
- Provides single platform for WASH partners to track each project from initial step of “Request” till Execution and Maintenance.
- Help partners to analyze current situation of sector that WWW and apply informed planning.



WASH MIS/GIS System (Cont.)

General Functions of the system:

- Provides transparent platform for donors to identify and invest on needy locations.
- Provides quality reports (Textual and GIS Maps) to all needy destinations. Also provides cross platform services to authorized users to get access online by computer, iPad or mobile phones from any part of Afghanistan.



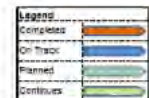
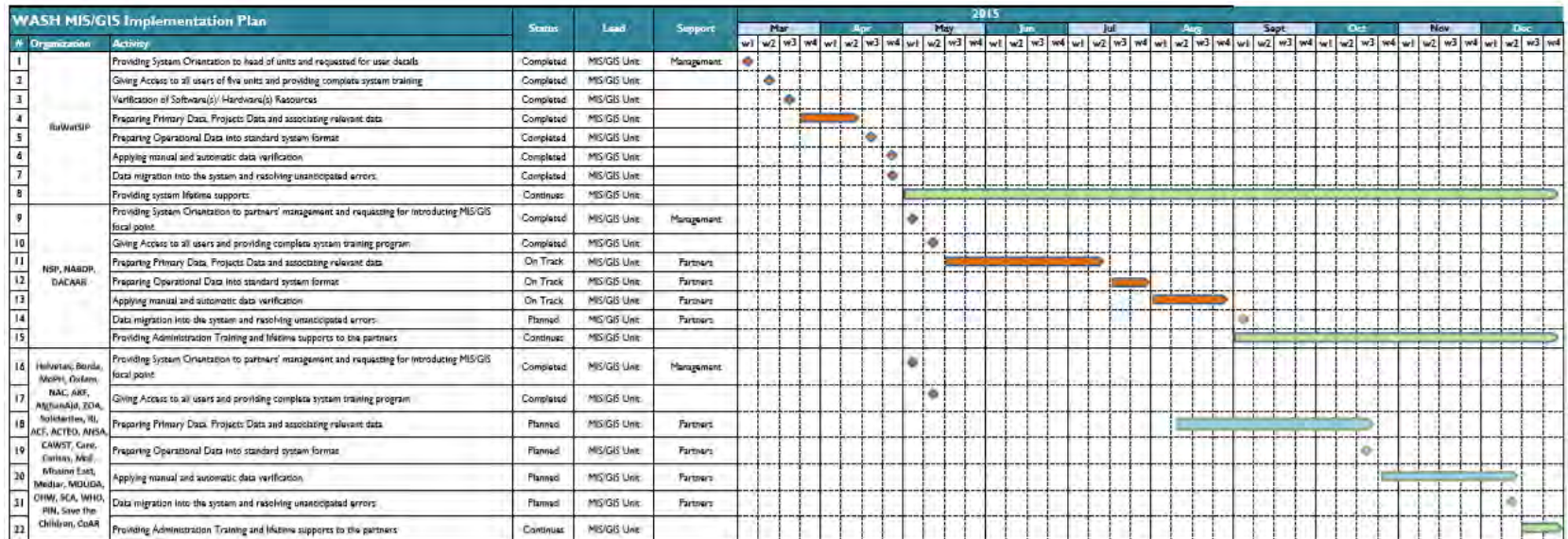
WASH MIS/GIS System (Cont.)

System Partners:



WASH MIS/GIS System (Cont.)

Implementation Plan:



System Orientation

Let's see practical view of the system...

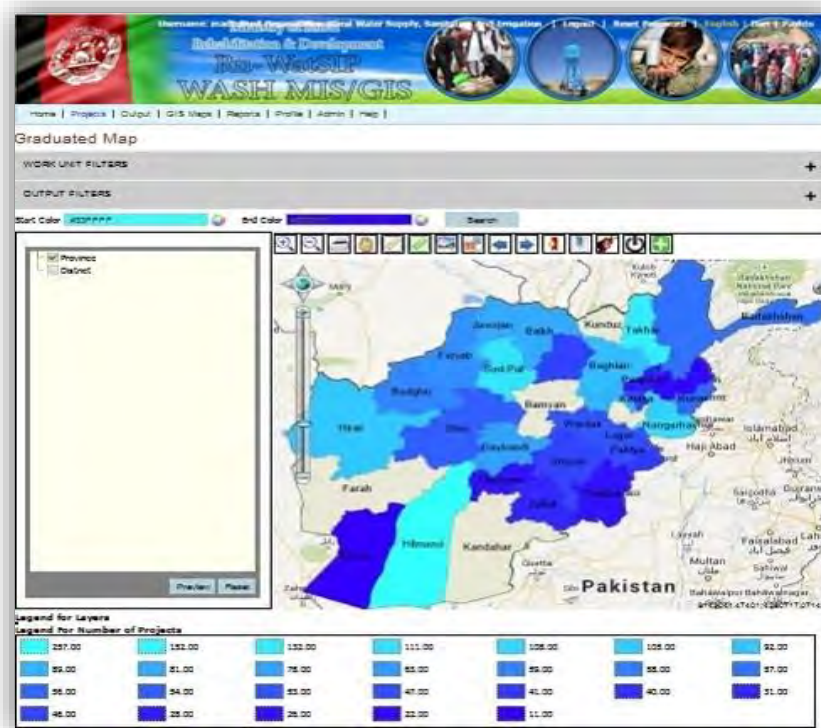
Username: madhvi | Password: 123456 | Log out | Reset Password | English | Dari | Pashto

Rehabilitation & Development
Ru-WatSIP
WASH MIS/GIS

Home | Projects | Output | GIS Maps | Reports | Profile | Admin | Help |

Dashboard

- Projects
- Output
- GIS Maps
 - Graduated Map
- Reports
 - MIS-Detail Reports
 - Procurements Progress
 - List of Projects
 - Signed Contracts Report
 - Signed Contracts Summary Report
 - Program Summary Report
 - Physical Performance Report
 - Ongoing projects
 - Completed projects
 - Carry Over Projects
 - System Auditing Report
 - MIS-Summary Reports
 - Matrix by Program
 - Matrix by province
 - Matrix by Donor
 - Matrix by Programme and Sector
 - Matrix by Province and sector
 - Matrix by Province, sector and output
 - Matrix by Sector and Output
 - M&E Reports
 - M&E Detail Report
 - M&E Summary Report
 - M&E Report Matrix By Output
- Admin
 - Master Table
 - Asset Type
 - Attribute
 - Program Detail
 - Donor Detail
 - Currency
 - Sector
 - Metric
 - Unit
 - Exchange Rate
 - Attorney
 - Client Name
 - Document Type
 - Engineer
 - Water Source
 - Document Source
 - ParameterType
 - Water Quality Parameter
 - Data Type
 - Location
 - Location Type
 - Location Type Level
 - Organization Role
- Profile
 - Demography
 - GeoGraphy
 - Organizations
 - People
- Help
 - English Manual
 - Dari Manual
 - Pashto Manual



<http://misgis.mrrd-ru-watsip.org>

THANK YOU!

